
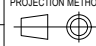
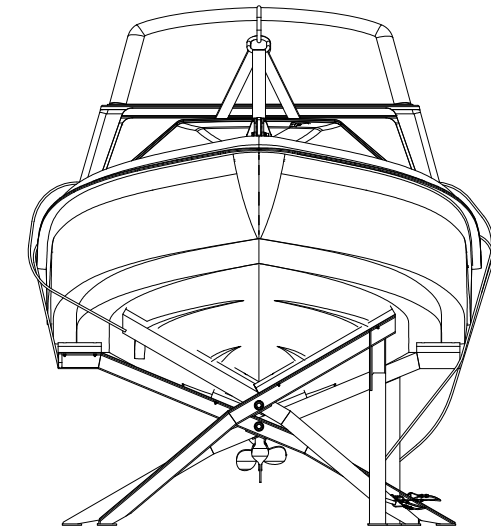
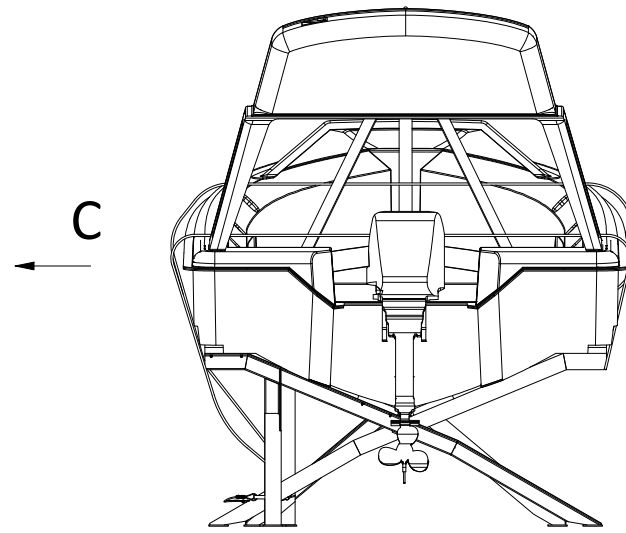
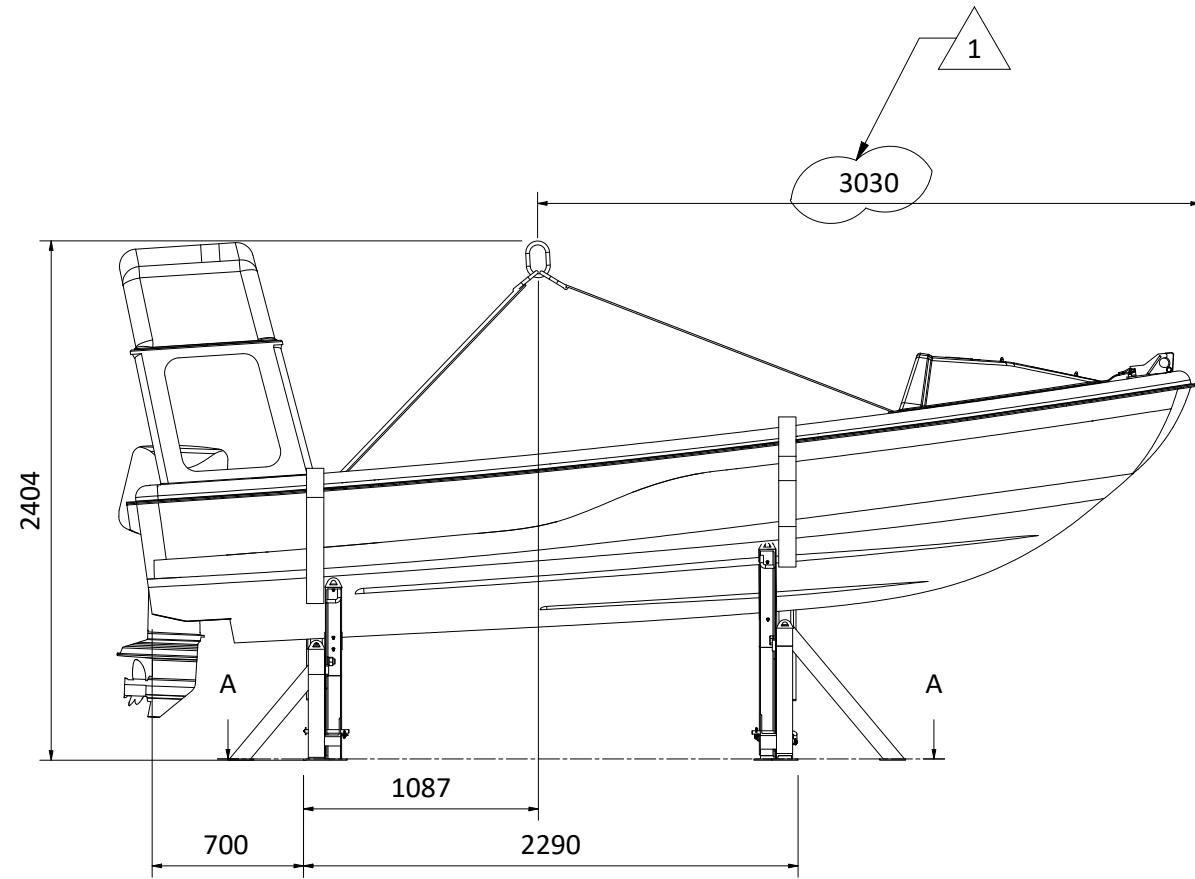


| REV | DESCRIPTION | BY | CHECK | APPRO | DATE |
|-----|--|------|-------|-------|------------|
| 1 | Updated the template and add dimension | EVJI | PHLI | THWA | 21.08.2019 |
| 0 | Issued for construction | PHLI | JKJI | THWA | 15.11.2018 |

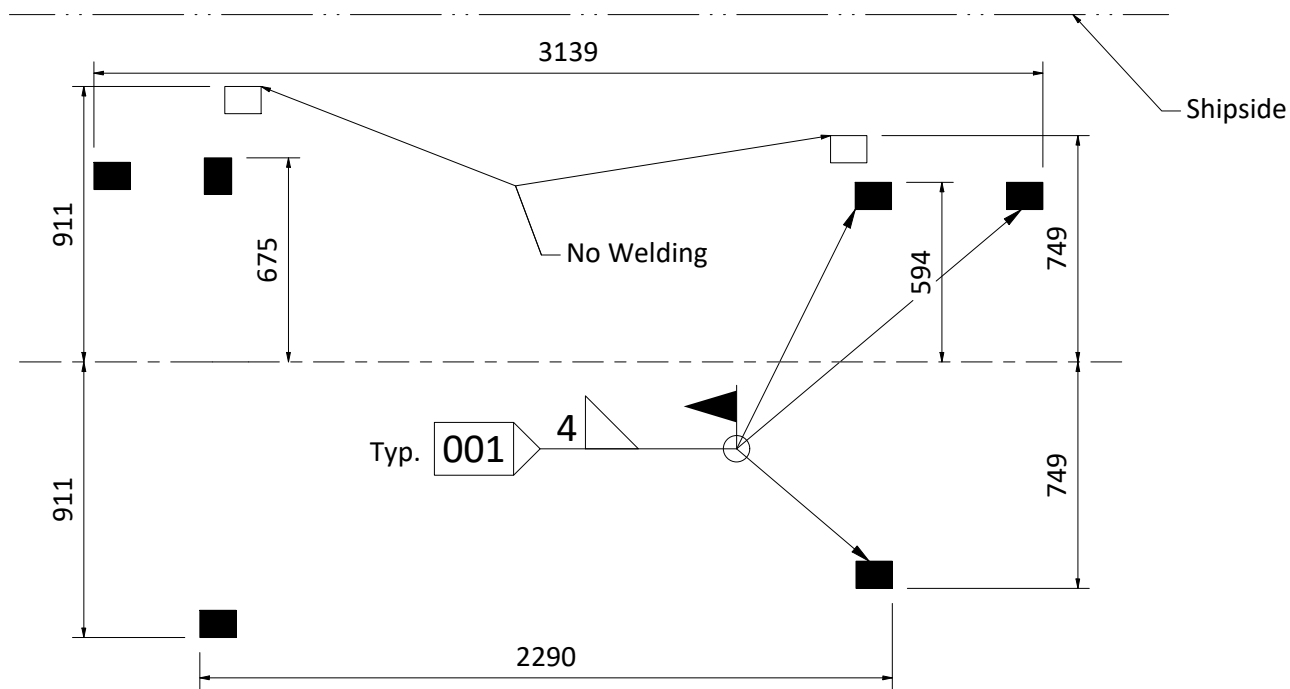
REVISION HISTORY

| | | | | | |
|---|--|---|------------------------------|-------------------|--------------|
|  | VIKING NORSAFE | VIKING Norsafe Life-Saving Equipment Norway AS P.O. Box 115 Tel: +47 37 05 85 00 4852 Færvik Fax: +47 37 05 85 01 NORWAY 24/7 Service: +47 37 05 63 33 Email: Viking-Norsafe@viking-life.com | | | |
| | | <small>This drawing is the sole property of VIKING Norsafe Life-Saving Equipment Norway AS. It must not be submitted to other parties nor used in any manner detrimental to our interests. It shall not be copied, reproduced, used for manufacturing or sale without the written consent of VIKING Norsafe Life-Saving Equipment Norway AS. All rights are reserved.</small> | | | |
| DWG SIZE: A3 | SCALE: | COPY OF: | PART NO. | WEIGHT: 93.138 kg | SHEET: 1 / 3 |
| CLIENT NO: | PROJECTION METHOD:  | | DECK CRADLE FOOTPRINT | | |
| TOLERANCES: ISO 2768-mk, ISO 13920-BF | REVISION: 1 | MIDGET-500 MKII SLINGS REFERENCE | | | |
| DWG No: R-503250 | PROJECT: | | | | |

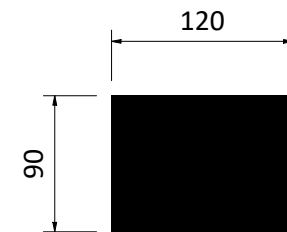
| WELDING INFORMATION | | | | | |
|---------------------|-------|----------------|---------------|-------------|----------|
| Build No: | | | | | |
| WELD NO. | JOINT | THROAT THICKN. | INSPECT. CAT. | WELD LENGTH | COMMENTS |
| 001 | | <10 | D | 2600 | |



Starboard arrangement



Foot Print Detail

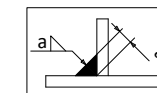


Notes:

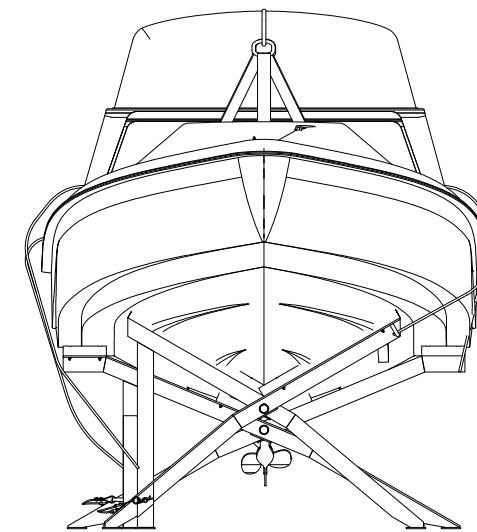
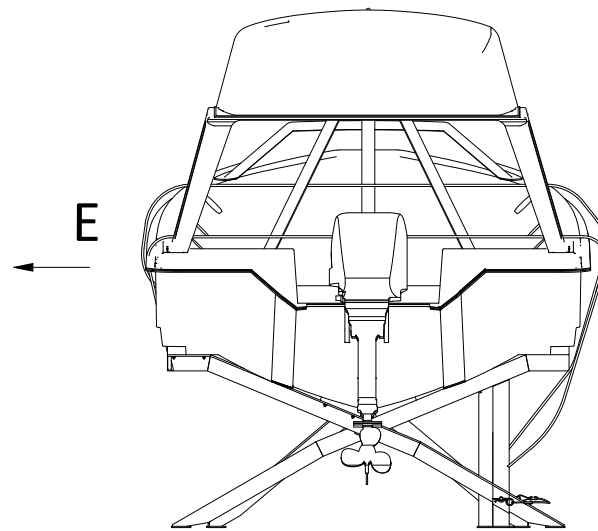
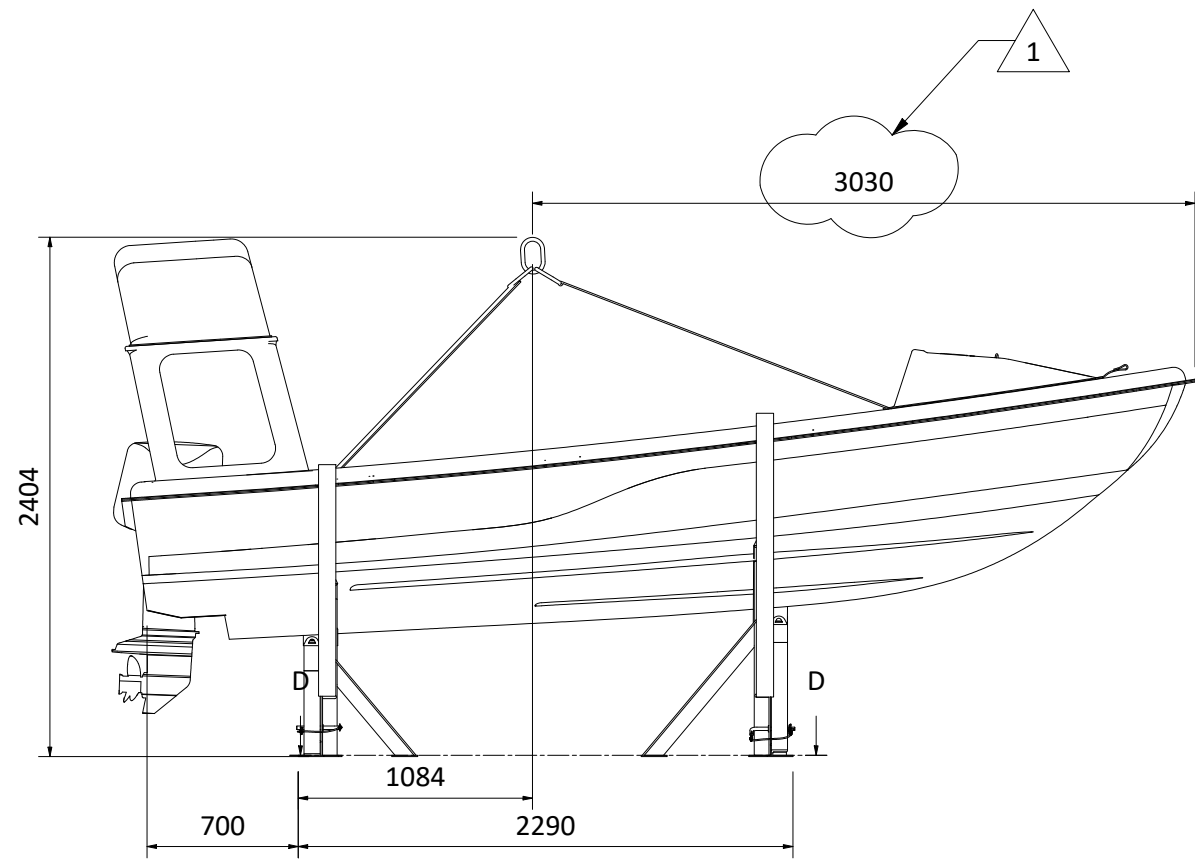
1. All edges to be rounded.
2. Welds to be made by persons certified to following standards or similar: ISO 9606 (EN 287) Part 1.
3. NDT inspection according to Norsok M-101.
4. Tilt angle should be according to different enginemodel.
5. This welding drawing will be used for Vessel'S camber that less than 3 degree.
6. As big horse power engines with different slings, the lifting point will be vary into 10cm!

A-A (1:25)

| | | | | |
|---------------------------------------|------------------------------------|-------------|--|---|
| | VIKING NORSAFE | | VIKING Norsafe Life-Saving Equipment Norway AS P.O. Box 115 Tel: +47 37 05 85 00 4852 Færevik Fax: +47 37 05 85 01 NORWAY 24/7 Service: +47 37 05 63 33 Email: Viking-Norsafe@viking-life.com | |
| | DWG SIZE: A3 SCALE: COPY OF: | CLIENT NO: | PROJECTION METHOD: | PART NO. WEIGHT: 93.138 kg SHEET: 2 / 3 |
| TOLERANCES: ISO 2768-mk, ISO 13920-BF | DWG No: R-503250 | REVISION: 1 | DECK CRADLE FOOTPRINT MIDGET-500 MKII SLINGS REFERENCE | |

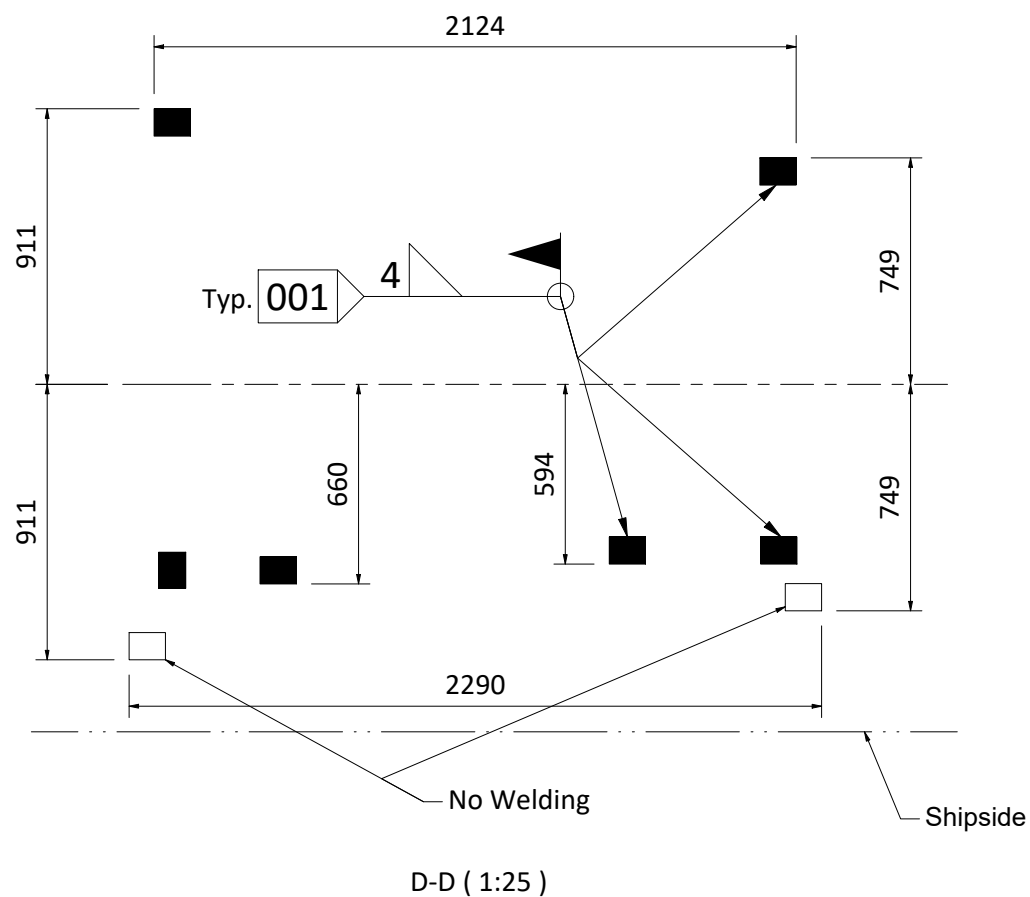


| WELDING INFORMATION | | | | | |
|---------------------|-------|----------------|---------------|-------------|----------|
| Build No: | | | | | |
| WELD NO. | JOINT | THROAT THICKN. | INSPECT. CAT. | WELD LENGTH | COMMENTS |
| 001 | △ | <10 | D | 2600 | |

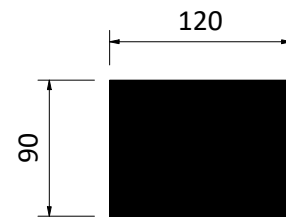


E (1:35)

Portside arrangement



Foot Print Detail



Notes:

1. All edges to be rounded.
2. Welds to be made by persons certified to following standards or similar: ISO 9606 (EN 287) Part 1.
3. NDT inspection according to Norsok M-101.
4. Tilt angle should be according to different engine model.
5. This welding drawing will be used for Vessel's camber that less than 3 degree.
6. As big horse power engines with different slings, the lifting point will be vary into 10cm!

| | | | | |
|---------------------------------------|------------------------------------|------------------|---|---|
| | VIKING NORSAFE | | VIKING Norsafe Life-Saving Equipment Norway AS P.O. Box 115 Tel: +47 37 05 85 00 4852 Færvik Fax: +47 37 05 85 01 NORWAY 24/7 Service: +47 37 05 63 33 Email: Viking-Norsafe@viking-life.com | |
| | DWG SIZE: A3 SCALE: COPY OF: | CLIENT NO: | PROJECTION METHOD: | PART NO. WEIGHT: 98.138 kg SHEET: 3 / 3 |
| TOLERANCES: ISO 2768-mk, ISO 13920-BF | | DWG No: R-503250 | REVISION: 1 | DECK CRADLE FOOTPRINT MIDGET-500 MKII SLINGS REFERENCE |

