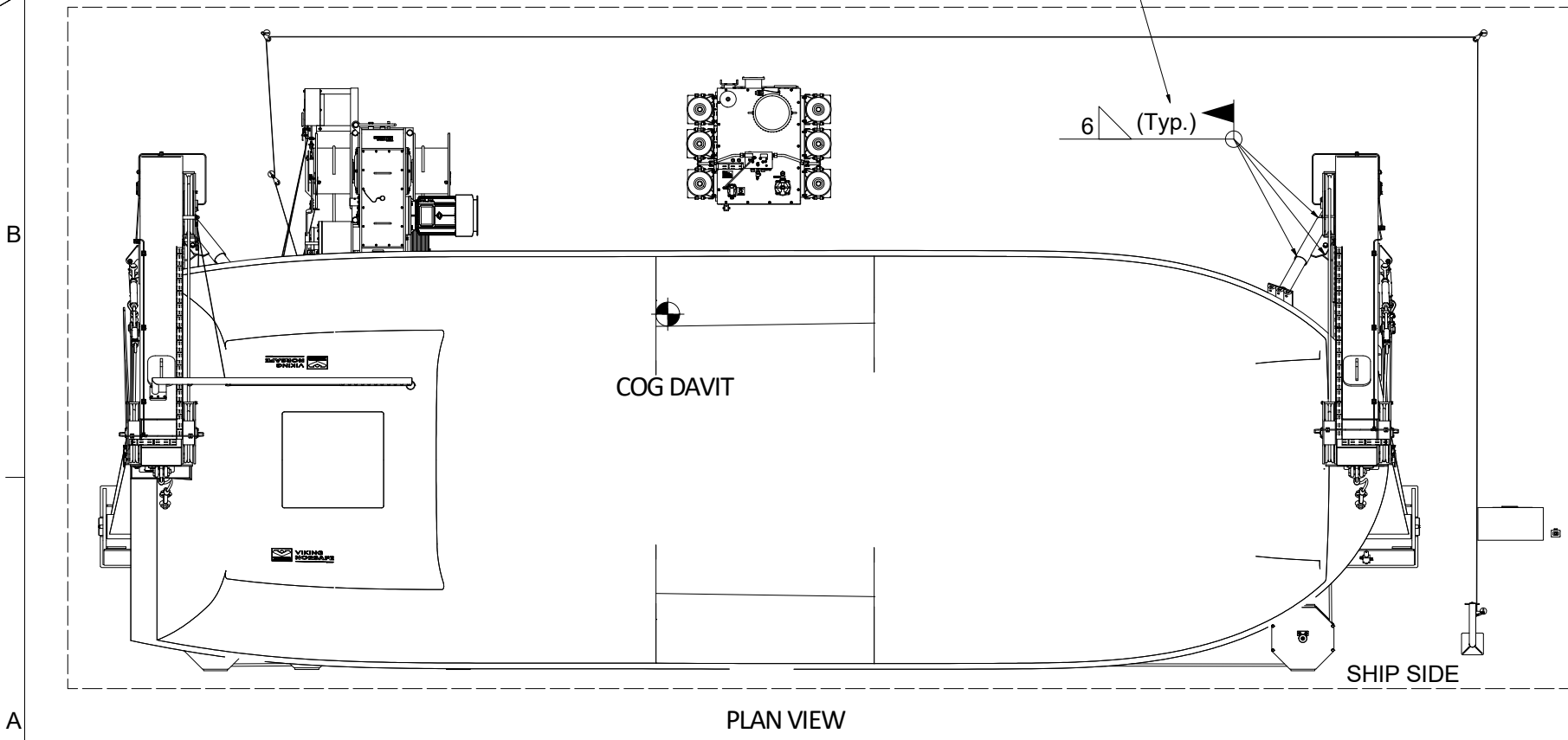


Buffers to be adjusted to position of boat, fixed with weld, cutted and welded with seal plate.



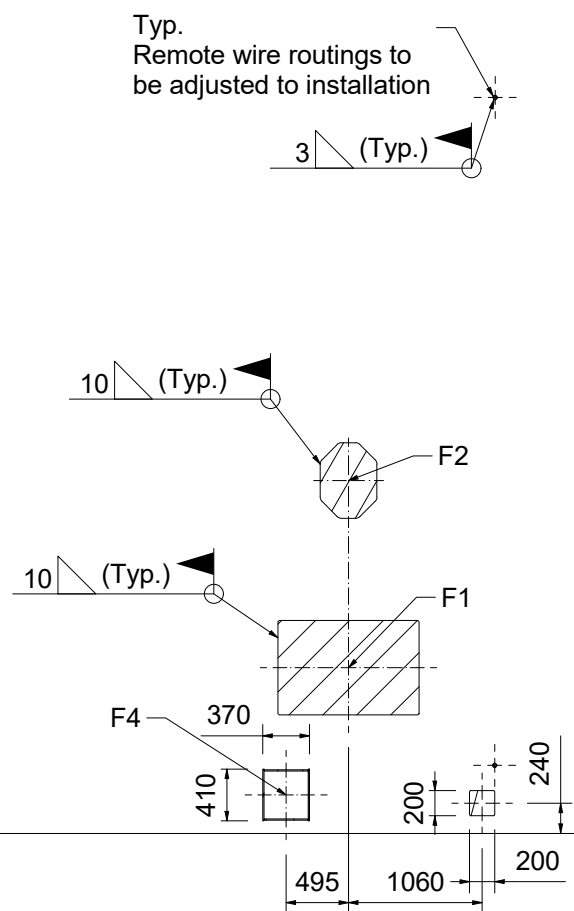
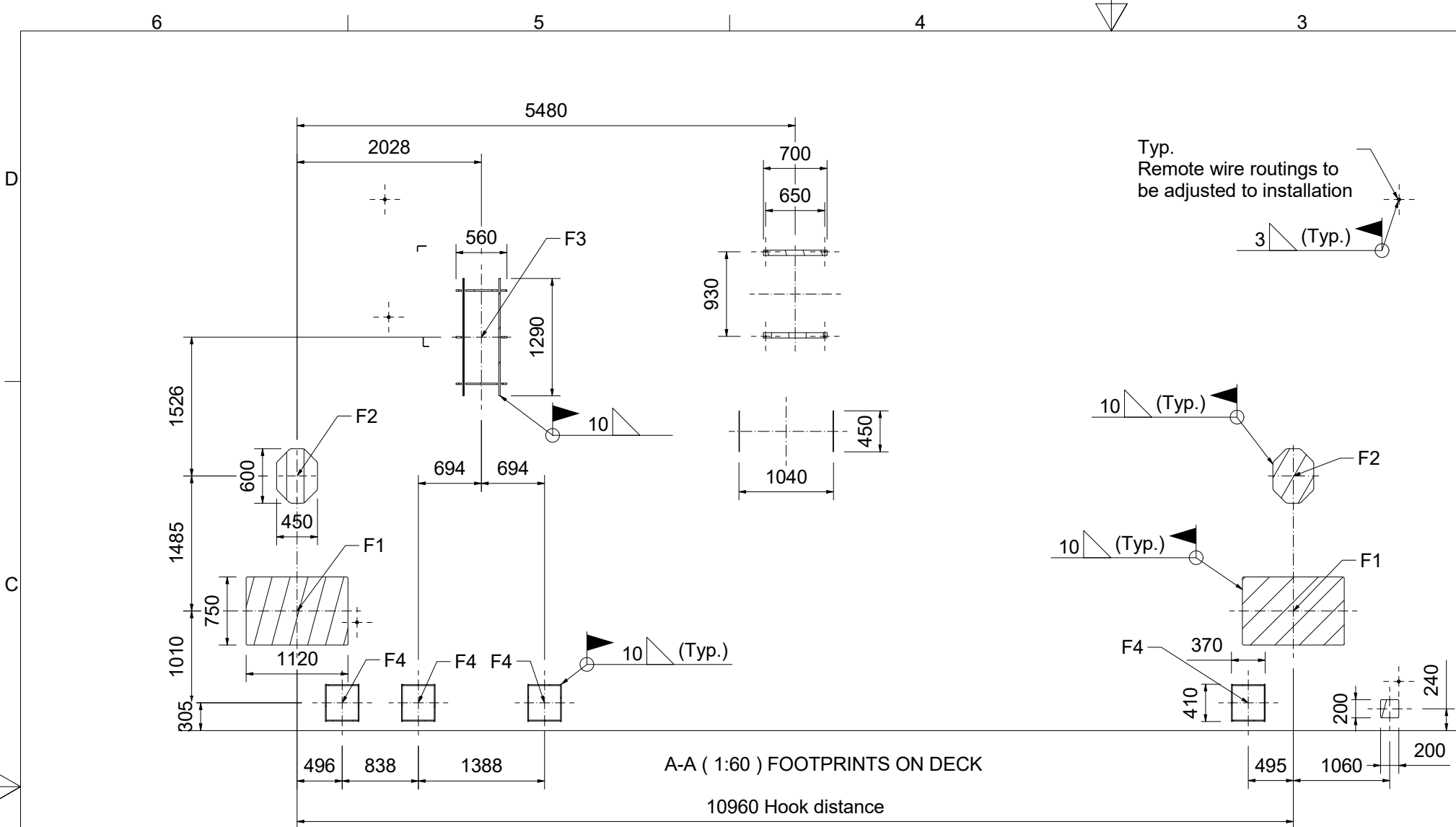
3	Update layout	ALJI	MISO	WAGU	25.09.2020
2	Update title block and logo	ALJI	MISO	WAGU	01.07.2019
1	Add note 14	ESO	PGO	JJB	02.10.2013
REV	REASON FOR ISSUE	BY	CHECK	APPRO	DATE

REVISION HISTORY

	VIKING NORSAFE VIKING Norsafe Life-Saving Equipment Norway AS P.O Box 115 4852 Færвик NORWAY Tel: +47 37 05 85 00 Fax: +47 37 05 85 01 24/7 Service: +47 37 05 63 33 Email: Viking-Norsafe@viking-life.com			
	Drawn by	Check by	Appr. by	Initial release date
ESO	MIM	JJB	17/02/2012	

Project number	Project name	Client number
Title	Material Number	
LH-185 FOR JYN-115, NW-120 MKIII		
Drawing type	Tolerances	Scale
GA	ISO 2768-mK, ISO 13920-BF	1:60
Drawing Number	Revision	Sheet Size
G-500070	3	A3
		Sheet No.
		1/2

This drawing is the sole property of VIKING Norsafe Life-Saving Equipment Norway AS. It must not be submitted to other parties nor used in any manner detrimental to our interests. It shall not be copied, reproduced, used for manufacturing or sale without the written consent of VIKING Norsafe Life-Saving Equipment Norway AS. All rights are reserved.

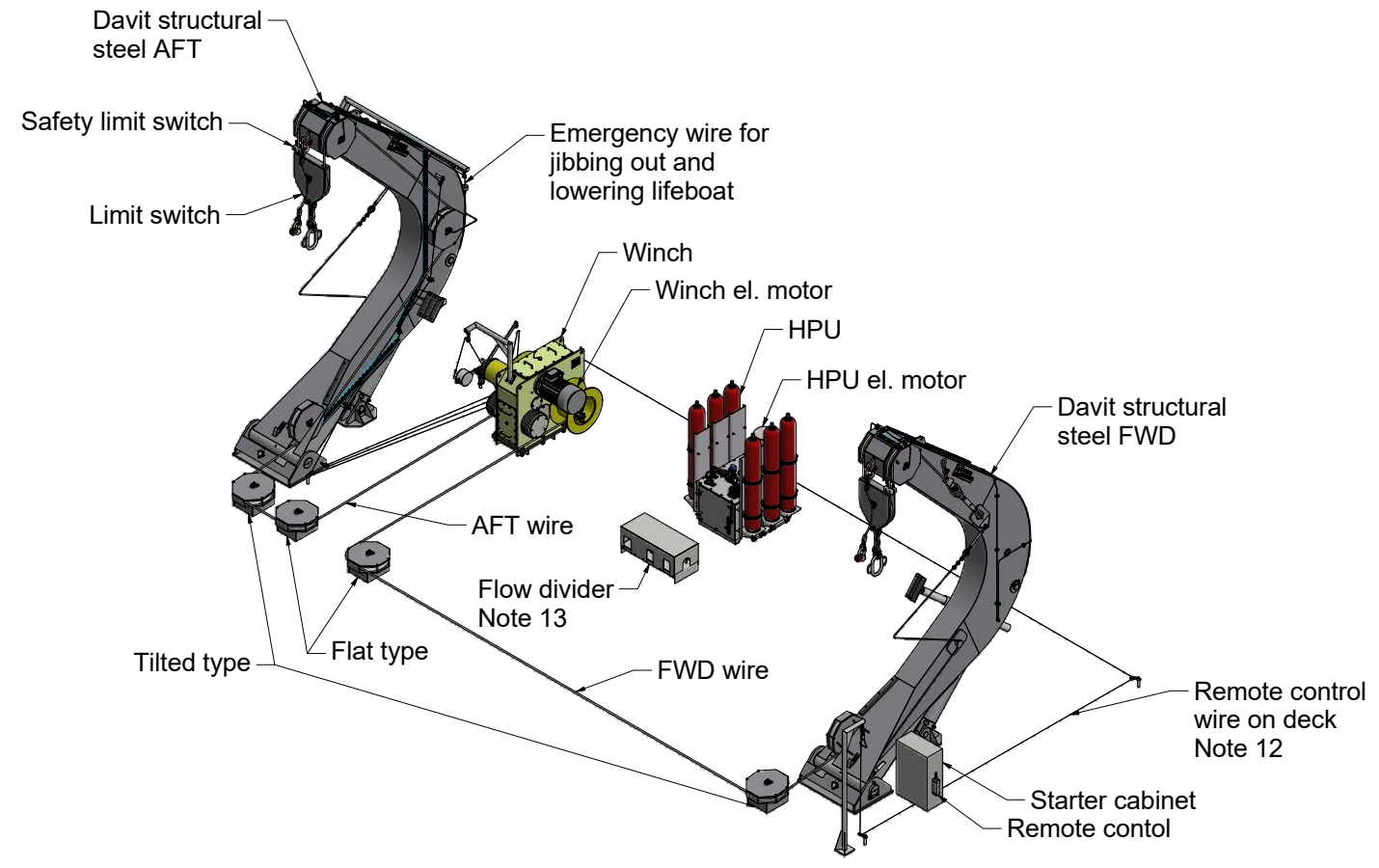


NOTES:

1. ALL ELECTRIC WIRING BY YARD
2. ALL FIELD WELDS TO BE PERFORMERD ACC. TO APPROVED WPS. (YARD RESPONSEBILITY) EN 287-1, ISO 9606-2 or ASME section IX. ALL FIELD WELDING IS SUBJECT TO CLASS APPROVAL PRIOR TO START WELDING.
3. ALL FIELD WELDS SHOWN TO BE WELDED BY YARD DURING INST.
4. HOISTING SPEED: Approx. 5m/min LOWERING SPEED:MAX 55m/min
5. SWL HOISTING : 9090 kg.
SWL LOWERING : 20390 kg.
6. WIRE LENGTHS:
WIRE 1: 31 m + 2 x (H + H1)
WIRE 2: 23 m + 2 x (H + H1)
H = HEIGHT FROM STOWAGE TO L.W.L.
H1 = ADDITIONAL HEIGHT DUE TO LIST AND TRIM CONDITIONS, UNLESS OTHERWISE AGREED.
H + H1 IS ASSUMED TO BE 20 METRES.
7. HPU - HYDRAULIC POWER UNIT TO BE LOCATED BY YARD max. PIPING BETWEEN HPU, FLOWDEVIDER AND DAVIT IS YARD SUPPLY, REOMENDED DISTANCE DAVIT-HPU: 10 PIPING m AT THE SAME LEVEL.
8. CENTER OF GRAVITY COG - FOR DAVIT ONLY.
FOR BOAT COG SEE BOAT DRAWINGS.
9. FOR LOCATION OF HATCHES, HOOKS AND OTHER BOAT DETAILS SEE BOAT DRAWINGS.
10. BOAT POSITION AND HULL PATH TRAJECTORY MAY VARY DUE TO LIMIT SWITCHES ADJUSTMENT.
11. ACCESS PLATFORMS & BOARDING, WALK WAYS, STAIRS & HANDRAILINGS, DOUBLER PLATES, ETC.: YARD SUPPLY - TO BE FINALIZED DURING LIFEBOAT INSTALLATION.
12. REMOTE CONTROL WIRE TO BE PLACED BY YARD; OPERATOR MUST SEE THE LIFEBOAT LOWER UNTIL WATERBORN.
13. FLOW DEVIDER TO BE PLACED EQUALLY PIPE LENGTHS BETWEEN DAVIT ARM.
14. DESIGN SPEC.: ACCORDING TO SOLAS, 10 DEGREES TRIM AND 20 DEGREES LIST.
15. STARBOARD DAVIT SHOWN, PORTSIDE IS MIRRORED.

ALL FORCES ARE POINT LOADS, WILL BE TRANSFERED TO DAVIT FOUNDATION, NOMINAL FORCES WITHOUT ANY FACTORS.
ALL FOUNDATIONS SHALL BE DESIGNED WITH A SAFETY FACTOR 4,5 MINIMUM.

	FORCE X	FORCE Y	FORCE Z	MOM X	MOM Y	MOM Z	Dead Weight
F1	+/- 22 kN	+/- 565 kN	+/- 238 kN	+/- 133 kNm	+/- 81 kNm	+/- 372 kNm	2100
F2	+/- 1 kN	+/- 438 kN	+/- 284 kN	+/- 47 kNm	+/- 0 kNm	+/- 1 kNm	444
F3	+/- 0 kN	+/- 95 kN	+/- 100 kN	+/- 0 kNm	+/- 0 kNm	+/- 0 kNm	TBC
F4	+/- 31 kN	+/- 0 kN	+/- 31 kN	+/- 0 kNm	+/- 0 kNm	+/- 0 kNm	156



**VIKING
NORSAFE**

VIKING Norsafe Life-Saving Equipment Norway AS
P.O Box 115 Tel: +47 37 05 85 00
4852 Færvik Fax: +47 37 05 85 01
NORWAY 24/7 Service: +47 37 05 63 33
Email: Viking-Norsafe@viking-life.com

Project number	Project name	Client number
Title LH-185 FOR JYN-115, NW-120 MKIII		Material Number
Drawing type GA		Weight 12859.4 kg
Drawing Number G-500070		Projection method
Tolerances ISO 2768-mK, ISO 13920-BF	Scale 1:60	Sheet Size A3
Revision 3	Appr. by JJJ	Initial release date 17/02/2012

This drawing is the sole property of VIKING Norsafe Life-Saving Equipment Norway AS. It must not be submitted to other parties nor used in any manner detrimental to our interests. It shall not be copied, reproduced, used for manufacturing or sale without the written consent of VIKING Norsafe Life-Saving Equipment Norway AS. All rights are reserved.