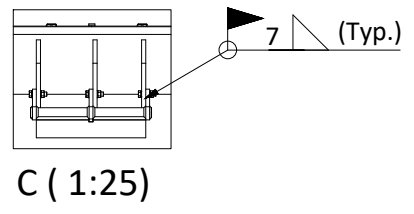
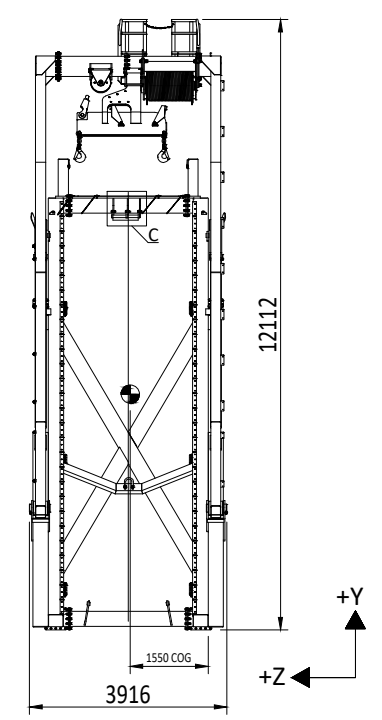


SIDE VIEW

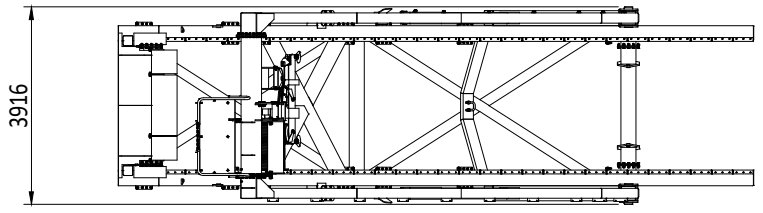


C (1:25)

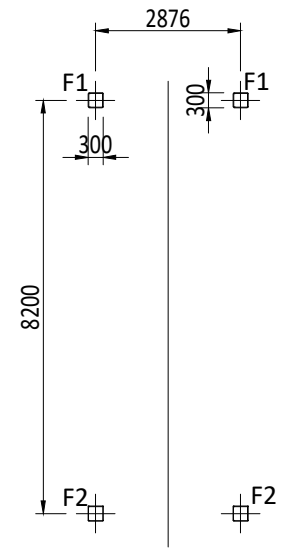


J (1:100)

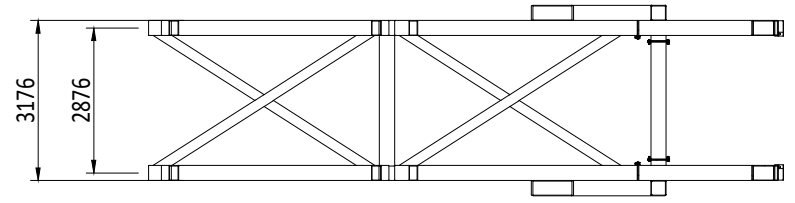
**SEEN FROM OUTSIDE RIG
BOAT REMOVED FOR CLARITY**



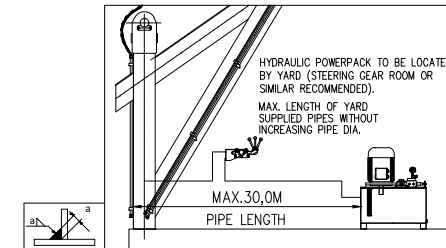
**PLAN VIEW
BOAT REMOVED FOR CLARITY**



**DAVIT INTERFACE POINTS TO RIG
K-K (1:100)**



**BOTTOM FRAME WORK
P-P (1:100)**



H-160 S Davit for GES-40 Free Fall Lifeboat:

SWL Lowering	14500 kg
Hoisting speed	5 m/min
Lowering speed	5 m/min
Total davit weight	21842 kg
Design specification	20° list / 10° trim
Primary means of launching	Free fall 20° list, 10° trim simultaneously
Secondary launching	Lowering by winch (5° list / 2° trim) EL. Power must be available
Max. inst. height	26 m

NOTES:

- Access platforms, handrails, doubler plates etc. :Yard supply.
- Location of hydraulic power unit to be decided by yard. (Under-deck installation IP55).
- Hydraulic piping between hydraulic power unit, davit and control valve to be yard supply.
- All electric wiring by yard.
- All field welds to be performed acc. to approved WPS. (Yard responsible)
All field welding is subject to class approval prior to start welding.
- All field welds shown to be welded by yard during installation. 100% NDT on all field welds as per yard qualified NDT procedures.

**FORCES IN DECK (POINT LOAD EACH SIDE):
VARIOUS COMBINATIONS OF 20° HEEL AND 10° LIST (SOLAS REQ.)**

	FORCE X	FORCE Y	FORCE Z	MOM X	MOM Y	MOM Z
F1	-200 kN	140 kN	±20 kN	±10 kNm	±20 kNm	80 kNm
F2	410 kN	140 kN	±40 kN	±10 kNm	±20 kNm	50 kNm

**FORCES IN DECK (POINT LOAD EACH SIDE):
A-FRAME OUT - DURING HOISTING/LOWERING OF FULLY LOADED BOAT**

	FORCE X	FORCE Y	FORCE Z	MOM X	MOM Y	MOM Z
F1	-290 kN	180 kN	±10 kN	±10 kNm	±10 kNm	100 kNm
F2	290 kN	50 kN	±10 kN	±10 kNm	±10 kNm	30 kNm

**FORCES IN DECK (POINT LOAD EACH SIDE):
VARIOUS COMBINATIONS OF 17° HEEL AND 17° LIST (NMD 492 REQ.)**

	FORCE X	FORCE Y	FORCE Z	MOM X	MOM Y	MOM Z
F1	-200 kN	140 kN	±20 kN	±10 kNm	±20 kNm	80 kNm
F2	400 kN	150 kN	±50 kN	±10 kNm	±20 kNm	60 kNm

Reaction forces:
Reaction forces as joint loads side, marked with nodes on deck interface.
For orientation of forces see legend with marked XYZ vectors.
All forces are point loads, nominal forces without any factors.

3	Reissued for approval	SHWA	GACA	WAGU	26.07.2022
2	Updated max. inst. height	SHWA	GACA	WAGU	18.09.2021
REV	DESCRIPTION	BY	CHECK	APPRO	DATE

REVISION HISTORY



VIKING NORSAFE

VIKING Norsafe Life-Saving Equipment Norway AS
P.O.Box 115 Tel: +47 37 05 85 00
4852 Færvik Fax: +47 37 05 85 01
NORWAY 24/7 Service: +47 37 05 63 33
Email: Viking-Norsafe@viking-life.com

Drawn by GACA Check by JETA Appr. by WAGU Initial release date 04.05.2013

Project number	Project name	Client number
Title H-160 S Davit for GES-40 Free-fall Lifeboat		Material Number N/A
Drawing type GA		Projection method
Drawing Number G-500089	Tolerances ISO 2768-mK, ISO 13920-BF	Scale 1:150
		Sheet Size A3
		Revision 3
		Sheet No. 1/1